

Welcome!

 Sphere

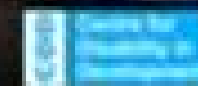
Leaving no one behind

Inclusion in COVID-19 responses in South Asia

Webinar | 27 August 2020 | bit.ly/sphere-covid19-inclusion

11am Geneva | 2pm Pakistan | 2:30pm India / Sri Lanka | 2:45 pm Nepal | 3pm Bangladesh

In partnership with



community
development

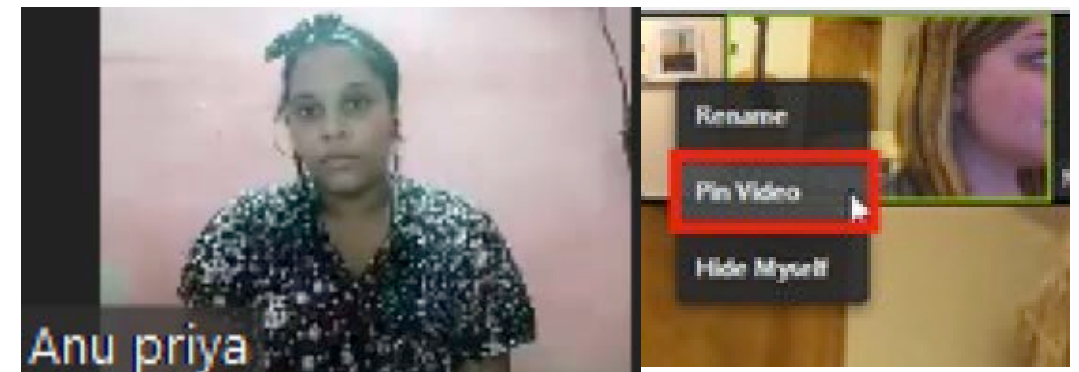


Sphere India



Accessibility

- Interpretation into American Sign Language (with Indian influence)
 - Right-click or hover over the signer →
 - Click “...” then “Pin Video” from the popup menu.
- Live captioning →



Webinar Objectives

- 1) Highlight examples of effective inclusion of, and leadership by, at-risk groups in the COVID-19 response in South Asia
- 2) Emphasise the importance of including at-risk groups in humanitarian responses, including while maintaining COVID-19 protocols;
- 3) Link examples of inclusion in COVID-19 responses to Sphere and other humanitarian standards; and
- 4) Elicit positive examples and challenges from webinar participants to promote further learning.

Agenda (2 hours total)

Welcome	Balwant Singh, Executive Director of Sphere
Introduction and housekeeping	Manisha Thomas, Facilitator
Speakers	Imran Hossain, Madhumitha Gomathinayagam
Group exercise	
Speakers	Mathew Cherian, Sarah Varughese
Breakout discussions	
Speaker	Vikrant Mahajan
Questions and Answers	

Some housekeeping rules...

- Please mute your microphones/turn off videos when not speaking 😊
- “Raise your hand” or write in the chat if you have a question
- We will split into breakout rooms. How does that work?
- Tweeting about the webinar? Tag us as [@SpherePRO](#)

NB: This webinar is being recorded

**We will share the recording
and the presentation at
bit.ly/sphere-covid19-inclusion**



Meet the facilitator and speakers



Manisha Thomas (facilitator)

International consultant and the Geneva representative of the Women's Refugee Commission



Imram Hossain

*Community Facilitator,
Centre for Disability in Development (CDD)*



Madhumitha Gomathinayagam

Consultant, HR Professional & Social Activist

Meet the facilitator and speakers



Mathew Cherian

Global Ambassador for HelpAge International and former Chief Executive of HelpAge India



Dr. Sara Varughese

Country Director of CBM India



Vikrant Mahajan

CEO of Sphere India and Sphere focal point representative

Presentations

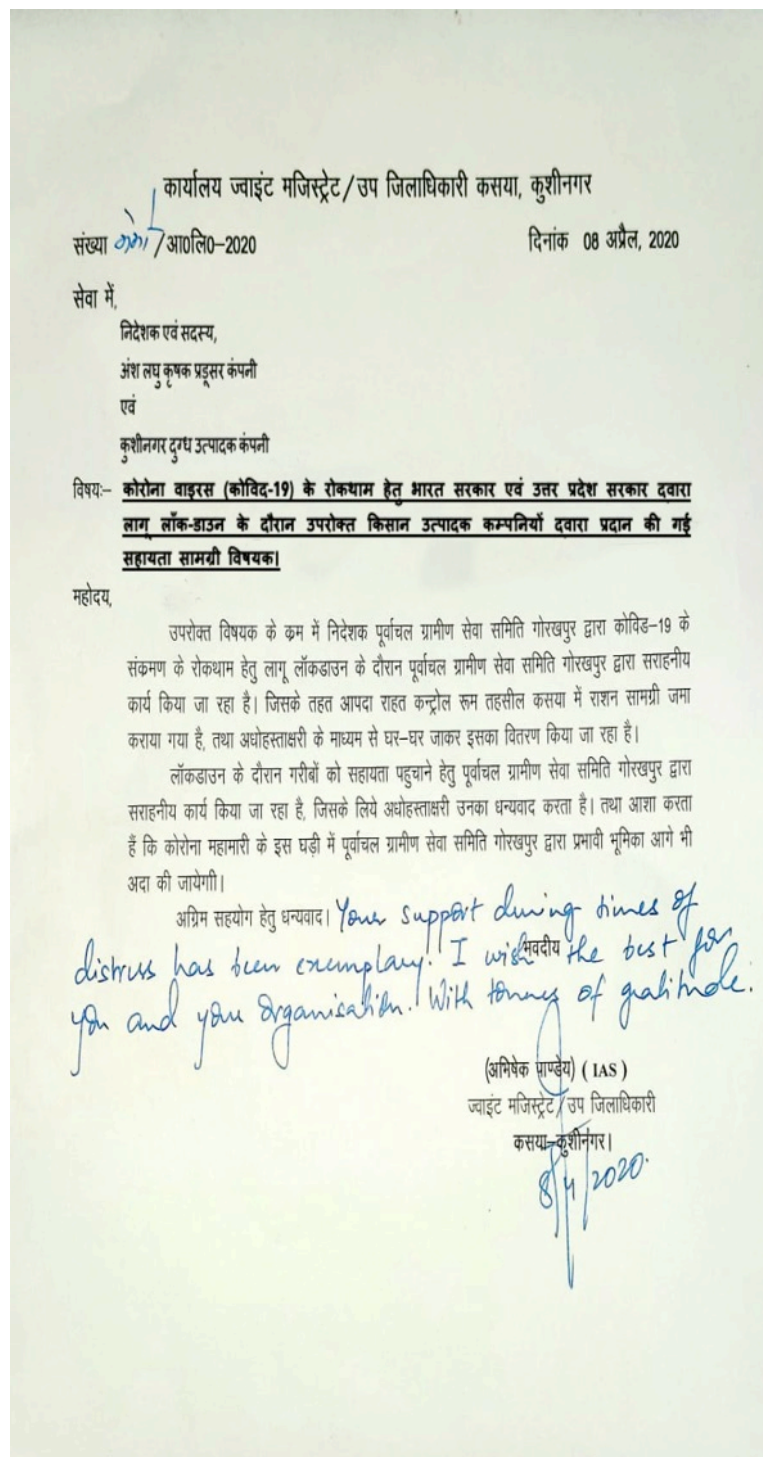


Inclusive Covid-19 Response by CBM in India



Contributing not just Receiving

Disability Inclusive Farmer Producer Companies - Annsh Laghu Krishak Producer Company Ltd. and Kushinagar Milk Producer company shared their profits of FY 2019-20 for relief work of Covid 19.



Disability Inclusive Humanitarian Assistance

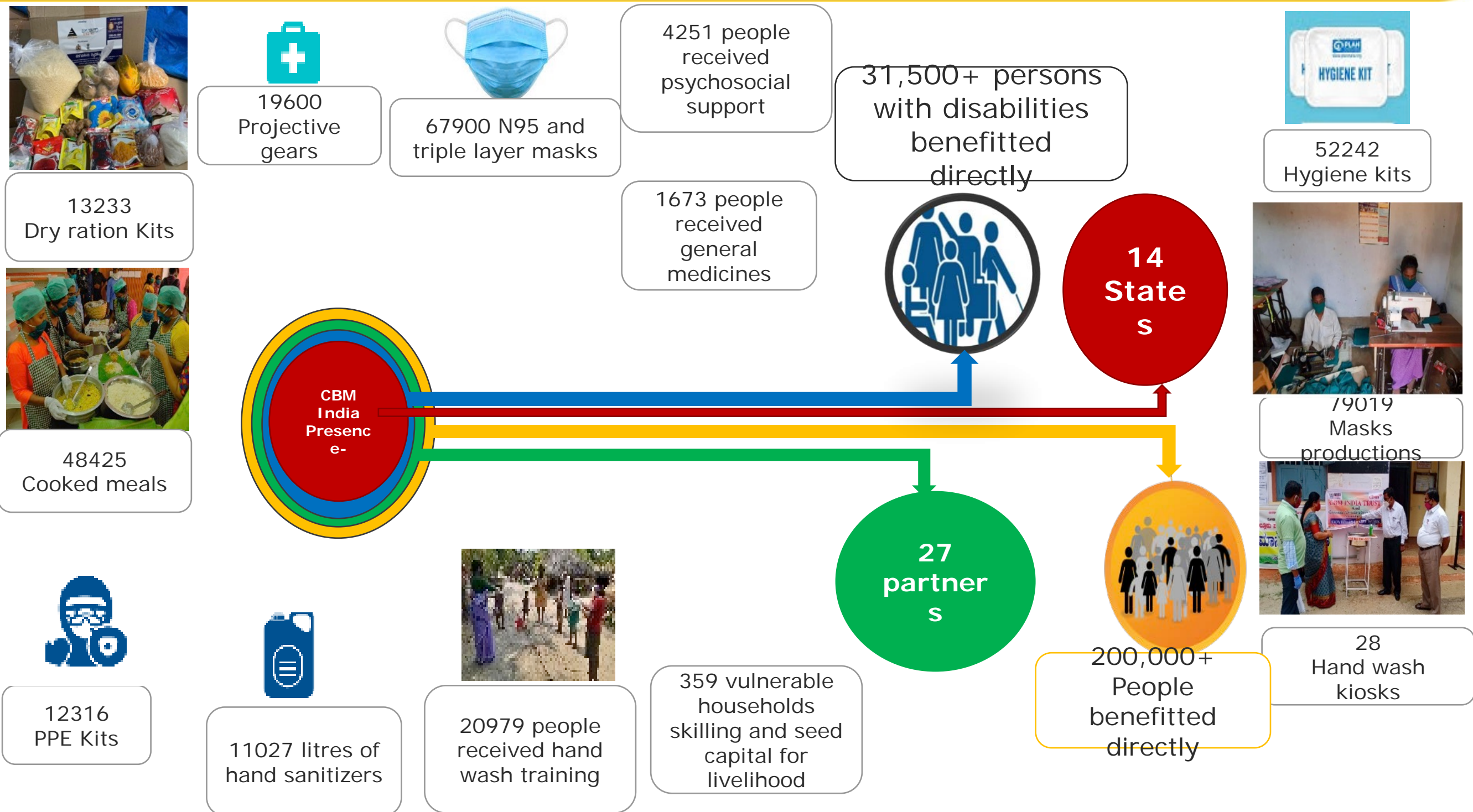
- **States Parties to take “all necessary measures to ensure the protection and safety of persons with disabilities in emergencies and the occurrence of natural disasters”**

- *The United Nations Convention on the Rights of Persons with Disabilities (CRPD) Article 11)*



- 15% of the world's population live with some form of disability ,
- Most vulnerable and neglected in any type of emergency / in disaster
- High rates of mortality and morbidity in disasters

An overview of COVID 19 response in India-relief



Inclusive COVID-19 response in India

- Food/ non food items
- Personal protective equipment's
- Creation of Accessible communication
- Research on impact of COVID 19 on people with disability
- Livelihood rehabilitation programme

- Online support for parents and teachers for teaching and therapeutic needs - Awareness videos and sign language videos
- Educational teaching and learning materials digitized
- Competitions, skill training and stress buster activities for children and parents of children with disability

Information for health care providers, and people with disability



DISABILITY INCLUSIVE HIGHLIGHTS

Persons with disabilities are among the vulnerable population and at greater risk of contracting COVID-19 infection. Hospitals can augment care & safety of Persons with Disabilities with the following accommodations:

- Accessibility of built environment, reliable information & disability specific communication.
- Affordability of services.
- Availability of Inclusive healthcare.
- Maintenance and display of contact details of organisations working for persons with disabilities for technical guidance & support.
- Dissemination of Institutional contact number/helpline for urgent support to persons with disabilities.

Ensure right to access quality healthcare.



Provide facility for counseling of persons with disabilities and their families/care-takers who feel distressed. Children with disabilities have specific needs. Provide them and their parents relevant and accessible information.



Sources

WHO COVID guidelines for healthcare institutions; 'Toward a Disability-Inclusive COVID-19 Response' - from the International Disability Alliance; ICMR guidelines to hospitals and healthcare workers; UN disability inclusion strategy.

DISABILITY INCLUSIVE COVID-19 RESPONSE -KEY POINTS FOR HEALTHCARE PROVIDERS TO ENSURE HEALTHCARE FOR ALL.

Disability specific challenges and solutions

A. Speech and hearing impairment:

Persons with speech and hearing impairments may have challenges in communication.



- Display pictorial information and written scripts at enquiry desks, registration counters, waiting areas, billing counters, entrances & exits to the hospital.
- Use sign language and captioning while disseminating information and advice.
- Use speech-to-text mobile apps wherever possible.
- Use masks with a transparent panel to help lip reading.

B. Visual impairment:

Persons with visual impairment have difficulty in maintaining social distancing. Assist them with patience but use appropriate infection control measures.



- Spread awareness on helpline numbers.
- All online information/platforms must be accessible.

C. Locomotor disabilities:

- Make available disinfectants and pictorial guidelines for disinfecting assistive devices like orthotics, walkers, wheelchairs etc.
- Encourage persons with locomotor disabilities to disinfect their assistive devices each time after returning home from a visit to a hospital, market place etc, or after using toilet and whenever visibly soiled.



D. Intellectual and learning disabilities:

- Persons with intellectual disabilities might need special care while accessing health and therapeutic care.
- The use of pictorial posters and methods to teach safety measures based on their ability should be considered.
- These children may have comorbid conditions that may require specific considerations.
- Persons with Intellectual Disability might need repeated hands-on demonstrations, prompts and practice to learn and follow safety measures at the health care centre and home.
- Use the local network organisations to support in communication and follow-up.



E. Children with Autism Spectrum Disorder (ASD) & Attention Deficit Hyperactivity Disorder (ADHD):

- Clinicians and health-care staff should be aware and ensure additional accommodations for persons with Autism Spectrum Disorder.
- Children with ADHD (uncontrolled) may have excessive contact with contaminated surfaces/ materials during movement and may need additional support to adhere to infection control protocols.
- Children with ADHD are at higher risk as they are more likely to forget safety precautions and may need verbal/pictorial reminders for the same.



F. Concerns and care of persons with blood disorders, chronic neurological conditions and elderly persons with disabilities:

- For persons with thalassemia, blood transfusions should be done through day-care facility to reduce hospital stay. If feasible, a dedicated staff may be assigned for persons with blood disorders undergoing blood transfusions.
- For persons with chronic neurological conditions, suggest teleconsultation for regular follow-up.
- Elderly persons with disabilities may have multiple issues - physical, psycho-social, and other health issues like dementia.
- The Elderly should not be discriminated against in provision of Covid-19 treatment.
- All healthcare providers must be empathetic and respectful towards elderly persons with disabilities and take utmost care to ensure their safety against infection transmission.



CBM India Trust
Address: #140, Commerce Cube, 5th Main, Puttannachetty Road, Chamrajpet, Bengaluru -560018, Karnataka India. Website: www.cbmindia.org.in

The rights of persons with disabilities to healthcare in the context of Covid-19 crisis

The Rights of Persons with Disabilities Act, 2016 (RPwD Act) mandates that persons with various disabilities must be ensured life with dignity and reasonable accommodations. Section 25 of the RPwD Act provides for provision of quality healthcare services to persons with disabilities on equal basis with others and priority in attendance and treatment. These provisions are mandatory.



Sources:

WHO COVID guidelines for healthcare institutions; 'Toward a Disability-Inclusive COVID-19 Response' - from the International Disability Alliance; ICMR guidelines to hospitals and healthcare workers; UN disability inclusion strategy.

Symptoms of Covid-19 infection

- Fever
- Cough
- Breathing difficulties
- Throat irritation



In case of these symptoms, contact a medical practitioner or hospital or check for telehealth facility to avoid unnecessary travel. Be patient during the call, explain clearly about your health problem, allow the doctor or healthcare professional to speak and then clarify your problem.



Developed By

CBM India Trust
Address: #140, Commerce Cube,
5th Main, Puttannachetty Road,
Chamrajpet, Bengaluru -560018,
Karnataka India.
Website: www.cbmindia.org.in

@CBM India



An ophthalmologist examining a patient using plastic shield on a slit-lamp at Sewasadan, Bhopal, Madhya Pradesh.

Information for guidance of persons with disabilities and their carers on COVID-19

- Community participation in the relief works; often led by people with disabilities and their organisations.
 - Identification of marginalised community
 - Other outreach activities during lockdown.
- Collaboration with District Administration and local government (SDM,BDO) crucial during lockdown.
- Collaboration with other NGOs also helped in avoiding overlapping in relief works
- Feedback mechanism in place

Long term Covid-19 response

- Tele health and rehabilitation services
- Tele and Mobile eye care programme
- Marketing FPOs products through E-commerce platform
- Education system through blended learning approach

Our guiding principles and standards

An introduction to the

Humanitarian
inclusion
standards for
older people
and people
with disabilities





Thank you

Breakout rooms



Breakout room questions

Please copy questions (from chat box) to take to breakout rooms with you

- 1) Based on your experience, what are some good examples of where you have seen at-risk groups leading COVID responses?
- 2) What roles have at-risk groups played in promoting Sphere and other humanitarian standards?

Feedback from Breakout rooms



Presentations



Questions & Answers



Recording and slides for this webinar
(coming soon):

bit.ly/sphere-covid19-inclusion

Join our upcoming webinars:

<https://www.spherestandards.org/events/>



Get in touch!

www.spherestandards.org
communications@spherestandards.org